

Anchored PowerSleeper™ SE

FIXED RESILIENT SYSTEMS

Aacer's Anchored PowerSleeper™ SE is a system that fully engages the resilient pad inside a steel channel ensuring uniform performance and increased structural stability. It is suitable for new and retrofit sports floor applications and commercial projects.

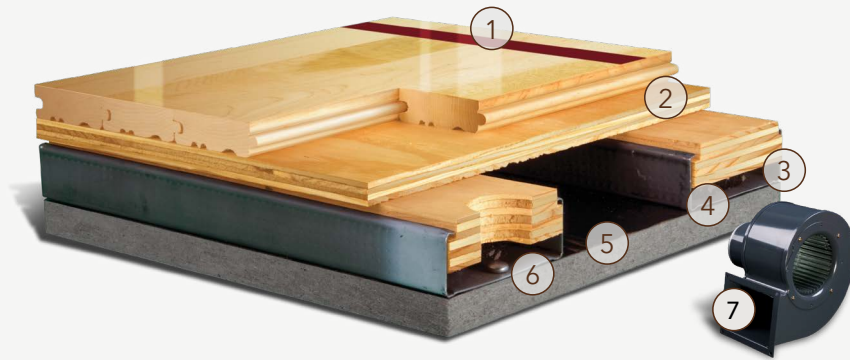


INFINITY
Wood Floors



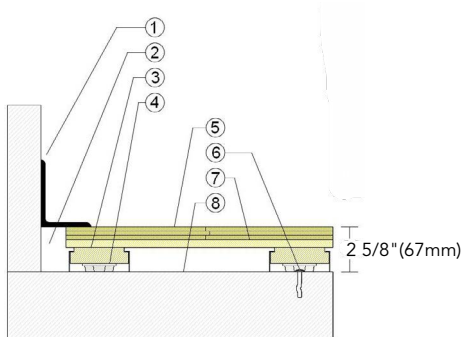
Anchored PowerSleeper™ SE

Anchored PowerSleeper™ SE is a uniform and stable floor system. It is perfect for new and retro fit projects. This floor system can be shimmed for uneven substrates.



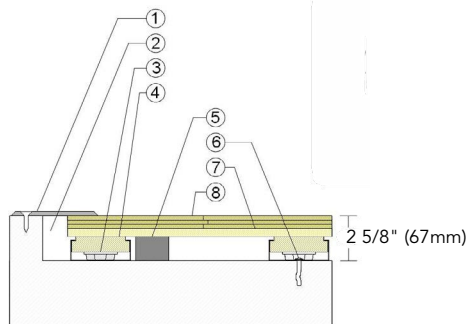
- | | |
|--|------------------------------|
| 1. Precision-milled Aacer Maple | 4. 1/2" (12mm) TriPower™ Pad |
| 2. 15/32" (12mm) Exposure 1, APA Rated Sheathing | 5. Vapor Retarder |
| 3. Pre-Engineered Steel Encased (SE) Plywood Sleeper | 6. Steel Concrete Anchor |
| | 7. PowerVent Airflow Option |

WALL BASE



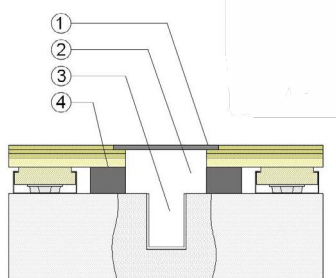
- 3" x 4" (76mm x 101mm) Vent Cove Base
- 1-1/2" (38mm) Perimeter Expansion Space
- Steel Encased Plywood Sleeper
- 1/2" (12mm) TriPower Resilient Pad
- 25/32" (20mm) MFMA Maple Flooring
- Steel Concrete Anchor
- 15/32" (12mm) Plywood Subfloor
- Vapor Retarder

THRESHOLD



- 1/4" (6mm) Aluminum Threshold
- 1-1/2" (38mm) Perimeter Expansion Space
- 1/2" (12mm) TriPower Resilient Pad
- Steel Encased Plywood Sleeper
- Solid Blocking Near Doorway
- Steel Concrete Anchor
- 15/32" (12mm) Plywood Subfloor
- 25/32" (20mm) MFMA Maple Flooring

EQUIPMENT



- Floor Plate
- 1 1/2" (38mm) Min. Expansion Space at all Inserts & Electrical Penetrations
- Concrete Floor Penetration
- Solid Blocking at Insert

Anchorage

Certified

Drill and Pin



Green Status and LEED Contributors



- FSC® Certified Maple - MR
- FSC® Certified Subfloor Components - MR
- Environmental Quality - EQ
- Regional Materials - MR

Resilience

1/2" (12mm) TriPower™ Resilient Pad
*Other pad options available.

Slab Depression

- 25/32" (20mm) Flooring - 2 5/8" (67mm)

Optional PowerSleeper Systems

Anchored PowerSleeper
Anchored PowerLoc
Anchored PowerLoc LP

System Type

Fixed Resilient

Subfloor Construction

Sleeper Plywood

Optional Protection Systems

PowerVent™ Airflow System

Testing Laboratory Partners



It is the policy of Infinity Wood Floors to continuously improve its line of products. Therefore, Infinity Wood Floors reserves the right to change, modify or discontinue systems, specifications and accessories of all products at any time without notice or obligation to purchaser.



see us at
Sweets.com

